

# CAST ACADEMY

## A 3-Part Learning Series to Support Science Instruction and the California Science Test (CAST)

In collaboration with LACOE, California State University Northridge (CSUN), and the California Association of Science Educators (CASE), we invite you to join us for a 3-part learning series where participants will:

### PART 1

Thursday, Sept. 26

4:30 PM - 5:30 PM

- Deepen understanding of how the CAST assessment is designed;
- Explore tools, resources, and sample assessment structures to support student success on the CAST;
- Interim Assessment Viewing System for Science.

### PART 2

Thursday, Oct. 10

4:30 PM - 5:30 PM

- Review protocols for analyzing student assessment data to inform progress of learning and instructional needs;
- Identify accessibility resources to support high quality teaching and learning in science instruction;
- Investigate instructional resources in Tools for Teachers.

### PART 3

Thursday, Oct. 24

4:30 PM - 5:30 PM

- Learn how to use science performance tasks formatively to support student learning all year long;
- Access performance task bank resources to support instruction;
- Identify ways to gather formative data from performance tasks to adjust teaching and learning.

**REGISTER FOR FREE ONLINE**

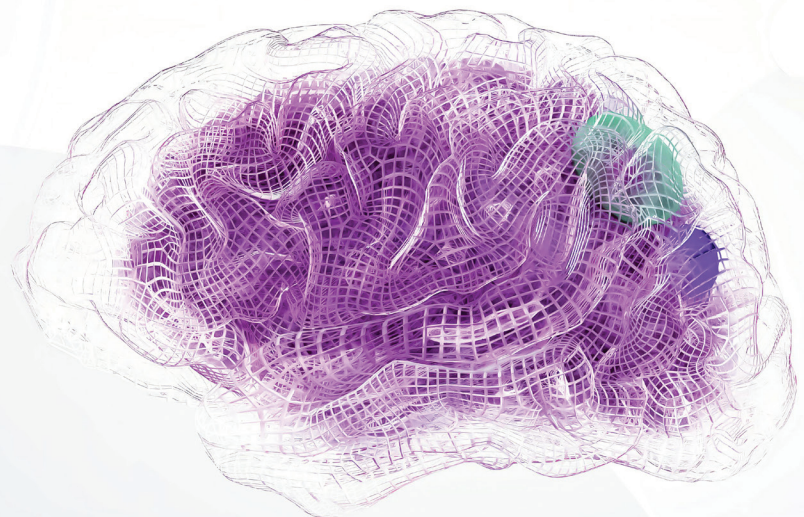
[HTTPS://LACOE.K12OMS.ORG/2582-255331](https://lacoe.k12oms.org/2582-255331)

#### TARGET AUDIENCE

Teachers, science specialists, TOSAs, testing coordinators, site administrators, directors of assessment, curriculum, and instruction.

#### TARGET PRIORITIES

Priority 4: Pupil Achievement  
Priority 2: Implementation of State Standards



*Zoom link will be provided to all registered participants prior to each session.*

*For questions regarding registration, please email [assessment@lacoe.edu](mailto:assessment@lacoe.edu)*



**Los Angeles County  
Office of Education**

