

CAST ACADEMY

4-Part Learning Series to Support Science Instruction and the California Science Test

In collaboration with Los Angeles County Office of Education (LACOE), California State University Northridge (CSUN), and the California Association of Science Educators (CASE), we invite you to join us for a 4-part learning series on **THURSDAYS FROM 4:00PM - 5:00PM** where participants will:

REGISTER FOR FREE ONLINE

[HTTPS://LACOE.K12OMS.ORG/2582-260424](https://lacoe.k12oms.org/2582-260424)

TARGET AUDIENCE

Teachers, science specialists, TOSAs, testing coordinators, site administrators, directors of assessment, curriculum, and instruction.

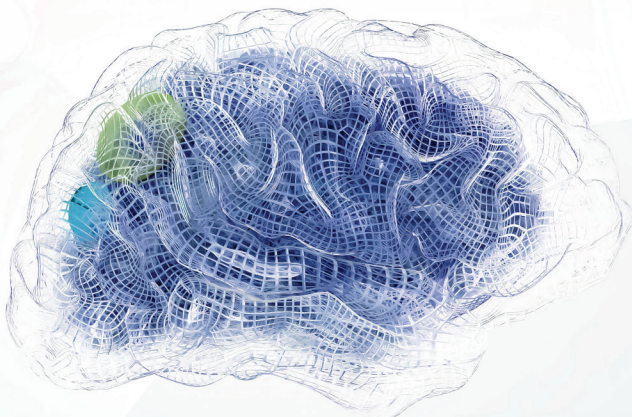
TARGET PRIORITIES

Priority 4: Pupil Achievement

Priority 2: Implementation of State Standards

Zoom link will be provided to all registered participants prior to each session.

For questions regarding registration, please email assessment@lacoe.edu



PART 1 JANUARY 16

INTRODUCTION TO CAST AND ASSESSMENT

- Deepen understanding of CAST design
- Explore tools, resources & sample assessments to support student success on CAST
- Reviewing CAST and State Accountability - what you need to know

PART 2 JANUARY 23

STUDENT SUCCESS, SUPPORTS & RESOURCES

- Identify accessibility resources to support HQ teaching & learning in science instruction
- Investigate instructional resources in Tools for Teachers

PART 3 JANUARY 30

USING ASSESSMENTS TO SUPPORT TEACHING AND LEARNING

- Review protocols for analyzing student assessment data to inform learning progress & instructional next steps
- Learn how to use science performance tasks as formative assessments to support student learning\access PT bank resources to support instruction
- Access PTs resources & Interim Assessment to supporting instructional practices

PART 4 FEBRUARY 6

BUILDING YOUR OWN ASSESSMENTS AND EMBEDDING 3D LEARNING

- ID ways to gather formative data from PTs to adjust teaching & learning
- Provide tools to support modifying & creating PTs for formative use in the classroom

